

Home

Realtor

Algebra ALEKS Topics

Algebra Notes

Algebra Reviews

MAT0028

MAC1105

MGF ALEKS Topics

MGF Reviews

MGF Notes

STA2023

Stats ALEKS Topics

Stats Notes

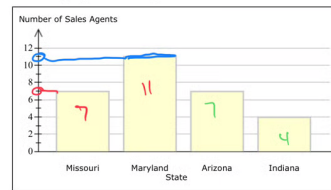
Stats Reviews

MGF Reviews / Midterm Exam Review

Question 1:

- Interpreting a bar graph

A hardware company has sales agents in 4 states. The number of agents in each state is shown in the bar graph below. Using this bar graph, answer the questions.



(a) Which state has the most sales agents?
☐ Missouri ☒ Maryland ☐ Arizona ☐ Indiana

How many sales agents does that state have?
agent(s) 11

(b) How many more sales agents are in Maryland than in Missouri?
more agent(s) $11 - 7 = 4$

(c) How many states have at most 7 sales agents?
state(s) 3

Question 2:

- Word problem with multiplication and addition or subtraction of whole numbers

Show your work on Test Work Page.

Bob brought 16 packs of cola to a party, and each pack had 6 cans. Jina brought 9 cans of juice. How many cans did they bring in all?

cans

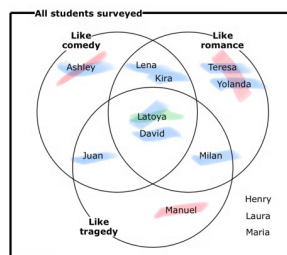
$$6 + 9 = 15 \text{ per pack}$$
$$16 \times 15 = 240$$

Question 3:

- Interpreting a Venn diagram with 3 sets for a real-world situation

Show your work on Test Work Page.

In a writing course, the professor surveyed the students to see the literature genres they like. The Venn diagram shows this information for three of the genres.



(a) Select all the genres that Latoya likes.
☒ comedy ☒ romance ☒ tragedy

(b) How many students like comedy or romance (or both)?
9

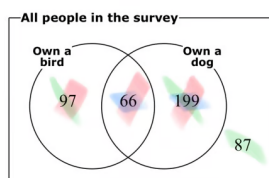
(c) Which students only like one of the three genres (comedy, romance, or tragedy)? Choose all that apply.
☒ Ashley ☐ David ☐ Henry ☒ Juan ☐ Kira
☐ Latoya ☐ Laura ☐ Lena ☒ Manuel ☐ Maria
☐ Milan ☒ Teresa ☒ Yolanda

Question 4:

- Interpreting Venn diagram cardinalities with 2 sets for a real-world situation

A pet store surveyed 449 people to see how many own a bird and how many own a dog.

The Venn diagram below shows the results. (Each number gives the number of people who fall into that Venn diagram category.)



(a) How many of the people own a dog?
people $66 + 199 = 265$

(b) How many of the people own a bird or a dog (or both)?
people $97 + 66 + 199 = 362$

(c) How many of the people do not own both a bird and a dog?
people $97 + 199 + 87 = 383$

Question 5:

Question 5:

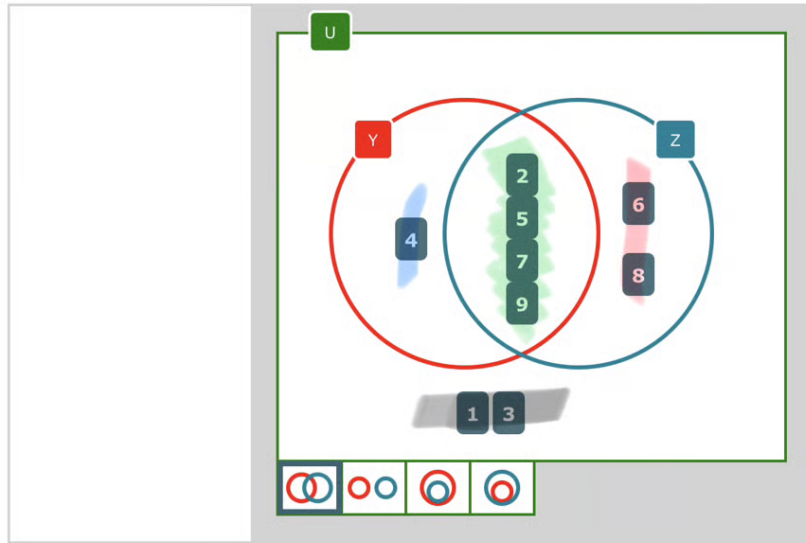
- Constructing a Venn diagram with 2 sets

Construct a Venn diagram illustrating the sets below.

$$U = \{1, 2, 3, 4, 5, 6, 7, 8, 9\}$$

$$Y = \{2, 4, 5, 7, 9\}$$

$$Z = \{2, 5, 6, 7, 8, 9\}$$



Question 6:

- U.S. Customary length conversions involving rounding decimals

Show your work on Test Work Page.

Question 7:

- Choosing metric measurement units

(a) Scott drank about 200 <input type="text" value="milliliters"/> of juice with lunch.	<i>other option is L. 200 L would be 100 L liters</i>
(b) The opening of the drinking straw was about 6 <input type="text" value="millimeters"/> wide.	<i>Super small</i>
(c) Rachel saw an elephant at the zoo. The elephant's mass was about 4000 <input type="text" value="kilograms"/> .	<i>↳ heavy</i>

Question 8:

- Metric distance conversion with decimal values

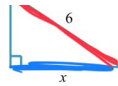
Show your work on Test Work Page.

Question 9:

- Similar right triangles

Find the length x .





$$\frac{x}{2.5} = \frac{6}{3}$$

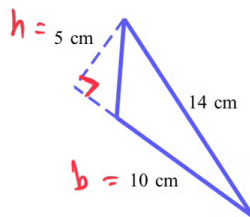
Show your work on Test Work Page.

Question 10:

- Area of a triangle

Find the area of the triangle below. Be sure to include the correct unit in your answer.

If necessary, refer to the [list of geometry formulas](#).

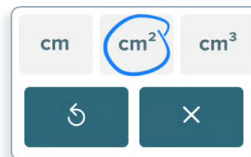


$$A = \frac{1}{2}bh$$

base : height always meet at the right angle

$$A = \frac{1}{2}(10\text{ cm})(5\text{ cm})$$

$$A = 25\text{ cm}^2$$



Question 11:

- Area of a circle

Show your work on Test Work Page.

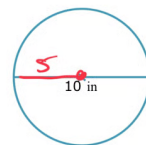
The diameter of a circle is 10 in.

Answer the parts below. Make sure that you use the correct units in your answers. If necessary, refer to the [list of geometry formulas](#).

radius is half of the diameter

$$d = 2r \text{ or } r = \frac{d}{2}$$

$$\frac{10}{2} = 5$$



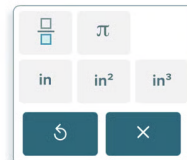
(a) Find the exact area of the circle. Write your answer in terms of π .

Exact area:

(b) Using the ALEKS calculator, approximate the area of the circle.

To do the approximation, use the π button on the calculator, and round your answer to the nearest hundredth.

Approximate area:



$$16 + 9 = 15 \text{ per pack}$$

$$16 \times 15 = \boxed{240}$$

Henry
Laura
Maria

Didn't like any genre

2 - Show your work. If using the calculator, write what you put into the calculator.

3 - List the words that were not included in the study but not part of the three main subjects.

$$\begin{array}{r|l} 50.76 \text{ ft} & 12 \text{ in} \\ & 1 \text{ ft} \end{array}$$

$$50.76 \times 12 = 609.12 \text{ in}$$

6 - Show your work. If using the calculator, write what you put into the calculator.

$$\frac{x}{2.5} = \frac{6}{3}$$

$$3x = 2.5(6)$$

$$\frac{3x}{3} = \frac{15}{3}$$

$$x = 5$$

9 - Show your work. If using the calculator, write what you put into the calculator.

900 m to Km

K H D meter D C M

★ 900

6 to the left

0.000900 = 0.0009 Km

8 - Show your work. If using the calculator, write what you put into the calculator.

$$A = \pi r^2 \quad r = 5$$

$$A = \pi 5^2 = 25\pi \text{ exact}$$

$$\text{Approx} = 78.54$$

(use calculator)

11 - In your own words, what is the difference between circumference and area?

Tags Archive RSS feed Youtube QR Code email akennon@fscj.edu with any issues on this website

Made with [Montaigne](#) and [bigmission](#) 🇺🇦